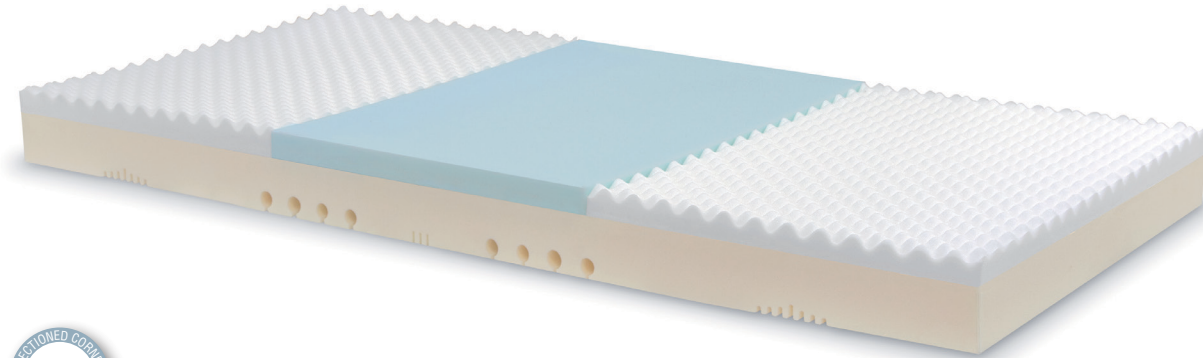


# Density450Mattress



Polyurethane HR + Viscoelastic



HR foam density 30kg



Lateral visco density 50kg



Central visco density 85kg



100% NATURAL LATEX FREE



CONFORMED material



THERMO-ADAPTABLE material



BREATHABLE material



NON-INFLAMMABLE material



Anti-allergy material



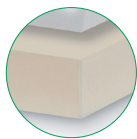
## + Mattress characteristics

Specially designed mattress to be used in hospital and health centres, for patients with medium ulceration risk or for patients with ulcers or sores up to grade II.

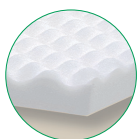
## + Technical specifications

|                              |                     |
|------------------------------|---------------------|
| Core height                  | 15 cm.              |
| Core weight                  | 10 kg.              |
| Maximum patient weight (MPW) | 230 kg.             |
| Ulceration risk              | III - Medium        |
| Available widths             | 80 / 85 / 90 cm.    |
| Available lengths            | 180 / 190 / 200 cm. |

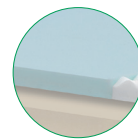
## + Core



- 1 HR polyurethane foam (40 kg/m<sup>3</sup>), with 10 cm. thick. Its high porosity allows a maximal air circulation inside the core.



- 2 Upper layer divided in three sections: head, lumbar and feet. The head and feet sections are made of thermo-sensible viscoelastic foam (50 kg/m<sup>3</sup>). 5 cm. height.



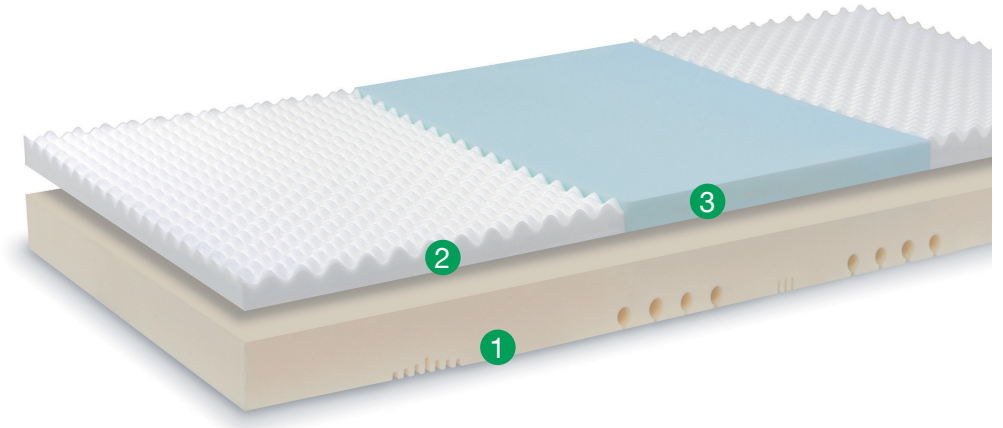
- 3 The central third is reinforced with a Viscoelastic foam with superior hardness (85 kg/m<sup>3</sup>), which provides higher resistance to subsidence, ensuring a total ergonomic posture. 5 cm. height.



# Density450Mattress



## + Core characteristics



- Core designed to offer a greater firmness in the body area with more patient weight: lumbar area. Both framed mattress ends, to facilitate the blood circulation and patient comfort.
- Adaptation capacity of the thermo-sensitive core, achieve a greater contact surface than a standard mattress, obtaining low capillary occlusion rates and preventing the PU's appearance.
- Framed inferior layer, in 5 sections, for better adaptability and movement of the sections.
- Fireproof core according to "Furniture and Furnishings (Fire)", BS 5852:2 CRIB2, UNE EN 597-1 and EN 597-2 regulations.
- All foams are Oeko-Tex class I and REACH certified.
- Symmetric core allows using indistinctly the head or feet areas
- OPTIONAL: Cut the mattress corners for better adaptability to beds.

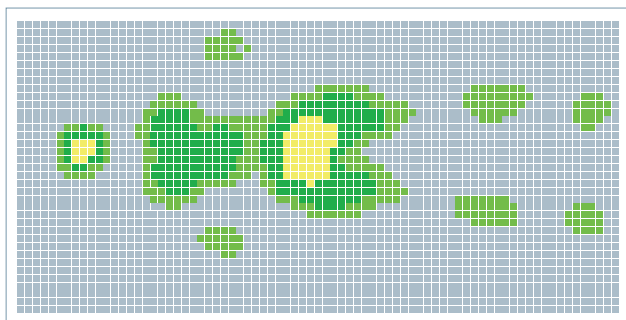
## + Pressure map

The contact pressure test shows that a Model user keeps in contact most parts of the body, no matter in the whatever position is taken, consequently there is a large contact surface between the mattress and the user, avoiding high pressure points that may cause pressure ulcers (bedsores).

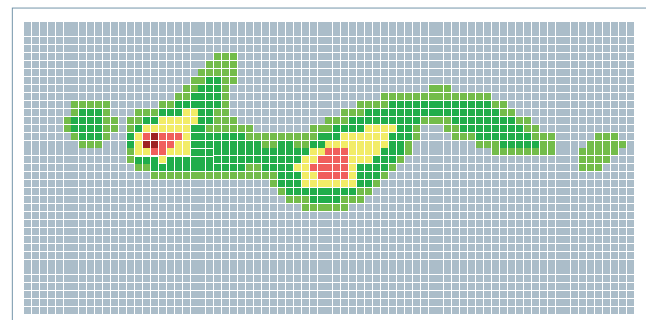
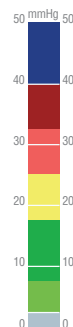
The test prove that it is a mattress ideal to be used with long term bed-ridden patients, as it is very comfortable and adapted to the patient.

In positions such as supine or Fowler, the medium pressure showed didn't exceed 20 mmHg.

In other positions, lateral or seated, the Model was on 30 mmHg. on average.



Gender: Female. Weight: 65kg. Height: 170cm.



Gender: Female. Weight: 65kg. Height: 170cm.